

# Is Radon in YOUR Home?

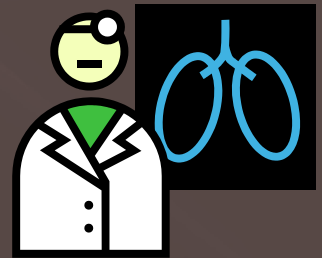


# WHAT IS RADON?

- Radon is an odorless, colorless, toxic gas that is derived from the decay of radium in the soil beneath your home.

*NOT to be confused with carbon monoxide (CO) caused by incomplete combustion due to faulty gas/wood furnace, stove, fireplace, etc...*

- Radon is the # 1 cause of lung cancer among NON-smokers in America killing 21,000 a year and rising.
- 2,900 of these deaths occurred among people who had never smoked.
- Smoking *increases* your risk 4 times!



# Where Does Radon Come From?

- ▣ Radon is caused by a breakdown of Uranium in the soil. It is present in almost all rock, soil, and water but at varying levels.
- ▣ The amount of radon depends on soil chemistry, which varies greatly from one house to the next.
- ▣ Radon moves up through the ground into the atmosphere where it can potentially enter your home through cracks/holes in the foundation.



# Could My Home Have Radon?

- Over half of Minnesota is in a zone that has the highest potential risk for elevated Radon levels. 1 in 3 homes in MN are above the threshold of EPA 4 pCi/L.

**ALL HOMES SHOULD BE TESTED FOR RADON! Regardless of location, zone, or if your neighbor tested...**

- The only way to be 100% sure that you or your family are not at risk for lung cancer due to radon levels is to **TEST YOUR HOME!**

# How Do I Test?

- ▣ A Radon test kit is a simple and effective way to get the radon level in your home.
- ▣ A test kit set for 3-7 days can indicate if you are *at risk* for radon induced lung cancer in your home.
- ▣ Past results for radon testing here at Leech Lake have ranged from 1 to 44 pCi/L...  
LL's action level is 2.7!

*What is YOUR level???*



# Where can I get this test kit?

- ▣ The Leech Lake Air Program provides these test kits free of charge to Leech Lake Members and Employees.
- ▣ Get your FREE test kit from the Air Program or Housing Monday – Friday 8-4:30.

Contact:

Johnny Brown ([brownj@midconetwork.com](mailto:brownj@midconetwork.com)) 335-3716

Brandy Toft ([air@lldrm.org](mailto:air@lldrm.org)) 335-7429 *or*

Ben Benoit ([benjamin.benoit@llojibwe.org](mailto:benjamin.benoit@llojibwe.org)) 335-7441

for more information.

***Get your free test kit today!***